



North Canberra Futsal



CAPITAL
FOOTBALL

COVID-19 SAFE PLAN FOR CLUBS **ALL AGE GROUPS**

VERSION 2 – 25 OCTOBER 2021

Clubs Submission

This COVID-19 safe plan is provided by North Canberra Futsal.

This plan outlines our operational delivery of Junior Futsal and U20 match play.

This plan will commence on 5 November 2021.

The club contact responsible for this plan is:

Jo Smith, NCF Registrar

registrar@northcanberrafutsal.com.au

0407213910

The Club acknowledges that this plan is in accordance with the Capital Football COVID-19 Safe Plan and is aware of the hygiene and safety aspects at training and matches.

Return to Football Guidelines - ACT

On Monday, 27 August 2021 the ACT Government released the pathway forward with easing of restrictions

These *Return to Football Guidelines* have been developed by Capital Football in line with the [ACT Pathway forward](#).

- **Phase C – 29 October**

- groups of up to 300 participants (including coaching staff) can return to training outdoors (1 person per 2 square meters).
- Matches may go ahead (intra and inter club)
- Matches can be played in NSW from 1 November
- Indoor competitions and training can proceed with a maximum of 300 depending on the size of the venue (in line with the 1 person per 4 square meters)

For more information, please visit the [ACT Government COVID-19 website](#).



Return to Football Guidelines - NSW

With NSW reaching the 80% double vaccination target, an updated Public Health Order (PHO) was published, with the updated restrictions having come into effect from Monday 18 October 2021.

The amendments to the PHO provide that the limit on the number of participants in a COVID-19 safe outdoor public gathering for a community sporting activity' is the lesser of 1000 people or 1 person per 2sqm.

From **Wednesday 20 October**;

- People aged 16 and over are fully vaccinated or have a valid medical exemption (Medical Certificate required); and
- Organised outdoor community sport, including club training, trials, friendly and competition matches can go ahead with a limit of 1000 people or 1 person per 2sqm
- For indoor sports including but not limited to training, trials, friendly and competition matches can go ahead with a limit of 20 people or 1 person per 4sqm

For more information, please visit the [NSW Office of Sport](#) and/or [NSW Government](#) COVID-19 website.

General Precautions

Attendance

Participants should not attend any training, if in the past 14 days they have:

- Felt unwell;
- Have any flu like symptoms;
- Travelled internationally;
- Travelled to any of the reported locations listed on the [ACT Health website](#) or [NSW Health website](#);
- Been exposed to a person with COVID-19;
- Been tested for COVID-19 and have not yet received the results ([please see COVID-19 protocol](#));
- Have a medical condition or are at an age that puts them in a high-risk category

Hygiene

- Ensure spaces, surfaces and objects at each venue are regularly cleaned
- Promote regular and thorough hand washing by club and team officials and participants
- No sharing of drink bottles
- Ensure bins are provided around the venue

Behaviour

- Cover mouth and nose with a tissue or your elbow (not your hands) when you cough or sneeze
- If using tissues, place them directly in the bins provided
- No spitting at any time



Snapshot of Return to Football Guidelines

Training /Matches

- ▶ Outdoor training/matches can be conducted in groups (300 excluding the coach in ACT, max 1000 including the coach in NSW)
- ▶ Indoor training/matches can be conducted in groups (300 excluding the coach in ACT, max 20 people including in NSW)
- ▶ Adequate spacing for each player and staff (applying the 1.5 metre social distancing rule and 2m² per person)
- ▶ Players to turn up no earlier than 15 minutes prior to the start of training
- ▶ Get in, play and get out
- ▶ Warm ups are to be done in the allocated training session or done at home prior to game

Football Venues

- ▶ All participants and spectators must check in using either the Check in CBR in the ACT or Service NSW for NSW
- ▶ Only essential participants should attend football or futsal activities (i.e. players, team officials, and limited spectators)
- ▶ Where possible, parents/guardians are encouraged to remain in the car or outside indoor venues
- ▶ Changerooms can be used
- ▶ One parent/guardian to drop off and pick up player from venue (applying the 1.5 metre social distancing rule)
- ▶ Encourage all venues to have clear vehicle and pedestrian entry and exits
- ▶ Players, staff and parents are required to leave the venue immediately after game

General Precautions

- ▶ Wash hands with soap and water often
- ▶ Use hand sanitiser if soap and water not available
- ▶ Clubs and venues should avoid any presentations or unnecessary gatherings
- ▶ Drink bottles must not be shared
- ▶ No handshakes, high-fives and body contact
- ▶ Education Theory sessions held online, practical sessions held in large groups (no more than 150 people outdoors and 100 people indoor, excluding instructors in ACT and no more than 1000 people outdoors and no more than 20 people indoors including instructors in NSW)
- ▶ Club meetings held online

Facemasks Requirements

ACT Requirements

- Anyone over the age of 12 must always wear a facemask in all indoor areas
- Children 12 years and under do NOT need to wear facemasks
- The only time a facemask does not have to worn indoors is when undertaking vigorous activity
- There are some exemptions for people who have a physical or mental health illness or condition, or disability that makes wearing a facemask unsuitable.
- For more information on facemasks please visit [here](#).

NSW Requirements

- Facemasks do not need to be worn in outdoor areas
- Anyone over the age of 12 must always wear a facemask in indoor areas
- Children 12 years and under do NOT need to wear facemasks
- There are some exemptions for people who have a physical or mental health illness or condition, or disability that makes wearing a facemask unsuitable.
- For more information on facemasks please visit [here](#).



Sign in Requirements

ACT Requirements

All spectators and participants must sign in using either the Check in CBR app or sign in sheet provided at the venue.

Before using the Check in CBR QR code, you will need to download the Check in CBR app. This can be found in either the [Google Play Store](#) or the [Apple App Store](#).

Once downloaded, register your details (required for the first time only). At all venues that have a Check in CBR QR code, please open the app, select 'Check in Now' and hover your smartphone over the displayed QR code and press 'Check in'.

If you do not have your smartphone on you, please sign in using the sign in sheets provided.

NSW Requirements

All spectators and participants must sign in using either the Service NSW app or sign in sheet provided at the venue.

The Service NSW app efficient contact tracing helps slow or stop the spread of COVID-19 in the community.

Businesses, events and organisations must [register as COVID Safe](#) to access their unique NSW Government QR code.

If you have already registered as COVID Safe, you will be emailed the unique QR code.

Using the NSW Government QR Code there are different ways for customers to check in. They can use their own mobile phone and:

- The service NSW app and a MyServiceNSW Account
- The service NSW app only
- The service NSW Check-in webform



Match Operations at Venue

Entry and Exit Management

- Games are scheduled so there is a gap 15 minute gap between games allowing teams/officials to leave before next teams are allowed entry to the venue.
- A maximum of 100 people will be allowed at any NCF venue (not court) allowing social distancing (1.5m or 4m²) to be maintained. At the netball centre each side of the grandstand (courts 1&2, courts 3&4) is considered a venue.
- Team officials, club officials, referees and spectators on benches/seating areas should maintain 1.5 metres distancing
- Five spectators per team will be permitted at this stage to comply with physical distancing protocols. Most NCF courts have limited usable space off court outside of team benches so spectator numbers need to be limited.
- Venue Managers will be COVID Marshalls to ensure protocols are adhered to at all venues.
- Social distancing will be maintained at all entry and exit points.

Player and Spectator Management

- Get in, play, get out.
- Venues will be cleared of participants prior to the next session/game. No new participants will be allowed entry until venue is cleared.
- No pass outs are allowed. Once participant leaves the venue they will not be allowed back in.
- No sharing of personal equipment including drink bottles, towels, bibs, GK gloves, shirts or shin pads.



Match Operations at Venue

Canteens

- A canteen will be open at the ACT Netball Centre but no canteen will operate at Radford College. The canteen will be run by ACT Netball.
- Social distancing around the canteen will be monitored by Venue Managers at the Netball Centre

Amenities

- Changerooms will be open for toilet facilities at NCF venues but will not be used as team changerooms.
- Signs will be placed on changerroom doors regarding the maximum number of people allowed.



Venue Map

LYNEHAM NETBALL CENTRE



Legend

Participant entry and access to courts



Participant exit from courts and venue



Grandstand and Spectator Seating



Team Bench



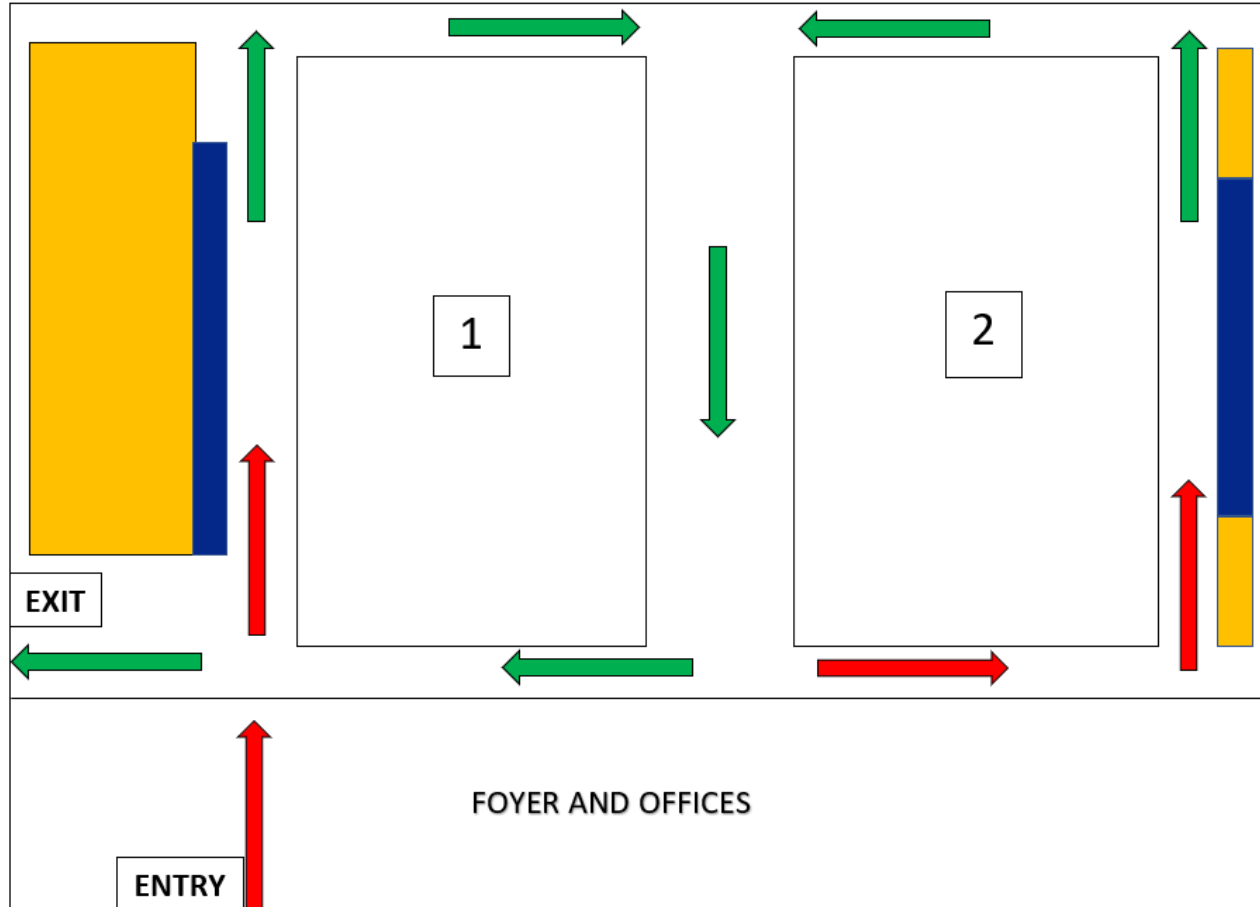
Court Number



CAPITAL
FOOTBALL

Venue Map

RADFORD COLLEGE



Legend

Participant entry and access to courts



Participant exit from courts and venue



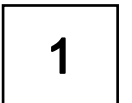
Grandstand and Spectator Seating



Team Bench



Court Number



CAPITAL
FOOTBALL

Resources

Capital Football has a COVID-19 resources page which can be found [here](#). This webpage has up to date information for clubs and members of the Capital Football community.

For further information about COVID-19 please visit the below resources

Government

- [ACT Pathway Forward](#)
- [NSW 80% Roadmap](#)
- [Australian Government information and resources](#)
- [ACT Government COVID-19 information and resources](#)
- [NSW Government COVID-19 information and resources](#)
- [National Principles for the resumption of sport and recreation activity](#)
- [NSW Government – Public Health Order \(no 2\) Local Government FAQ](#)

Downloads

- [Check in CBR](#)
- [Service NSW](#)
- [Google Meet](#)
- [Zoom](#)

