



**CAPITAL
FOOTBALL**

COVID SAFE PLAN
FINAL SERIES

VERSION CONTROL

VERSION	DATE	AUTHOR	RATIONALE
1.0	03/09/2020	Capital Football	Return to Play Guidelines – Final Series
1.1	16/09/2020	Capital Football	Updated maps
1.2	22/09/2020	Capital Football	Updated information and maps

CONTENTS

Version control.....	2
Purpose	4
Resources.....	4
Government	4
Downloads	4
Attending Final Series	5
General Precautions	5
Hygiene	5
Behaviour	5
Travel	5
What is permitted During Final Series	6
What is not permitted during Final Series.....	6
Entry and exits to venues.....	7
Seating and Spectators.....	7
Attendance Records at Venue	7
Changerooms	7
Amenities	8
Canteens	8
Organisation of team Benches	8
Communication	9
Annexure A – Venue Maps	10
Deakin Stadium	10
Melrose Synthetic	11
Kaleen Enclosed	12
O'Connor Park - Cootamundra	13

PURPOSE

The purpose of the Covid Safe Plan is to provide clubs information and guidelines for upcoming final series for the following competitions;

- ▶ NPLW (U13, U15, U17, Reserves and 1st Grade)
- ▶ NPL1 (U23 and 1st Grade)
- ▶ NPL2 (U23 and 1st Grade)

It focuses on physical distancing, personal and respiratory hygiene and managing gatherings while at finals matches.

RESOURCES

The Capital Football website has a COVID-19 resources page which can be found [here](#). This webpage has up to date information for clubs and members of the Capital Football community.

For further information about COVID-19 please visit the below resources;

GOVERNMENT

- [Australian Government information and resources](#)
- [ACT Government COVID-19 information and resources](#)
- [NSW Government COVID-19 information and resources](#)
- [AIS Framework for Rebooting Sport](#)
- [National Principles for the resumption of sport and recreation activity](#)
- [NSW Government – Public Health Order \(no 2\) Local Government FAQ](#)
- [ACT Government Food Safety Regulations](#)
- [NSW Governments Food Authority.](#)

DOWNLOADS

- [COVIDSafe app](#)



To further aid the fight against COVID-19, Capital Football supports the Australian Government's COVIDSafe app and strongly encourage all members of the football community to get behind this initiative.

The app can be downloaded from the Apple App store and Google Play

ATTENDING FINAL SERIES

Participants and spectators should not attend training or matches, if in the past 14 days they have:

- ▶ Felt unwell
- ▶ Had any flu-like symptoms
- ▶ Travelled internationally
- ▶ Travelled into Victoria
- ▶ Travelled to any of the reported case locations listed on the [NSW Health website](#)
- ▶ Been exposed to a person with COVID-19
- ▶ Been tested for COVID-19 and have not yet received the results ([please see COVID-19 Protocol](#))
- ▶ Have a medical condition or are at an age that puts them in a high-risk category

GENERAL PRECAUTIONS

HYGIENE

- ▶ Professional cleaners will clean the toilets and high touch points every 2 hours
- ▶ Provide hand washing guidance, including access to water, soap and hand sanitiser
- ▶ Provide hand sanitising stations at the entry to the venues and at high touch point areas such as the canteen, changerooms and toilets
- ▶ Encourage people to bring hand sanitiser
- ▶ Promote regular and thorough hand washing by club and team officials and participants
- ▶ Manage sharing of pens and clipboards by provided cleaning wipes
- ▶ No sharing of drink bottles, and ensure that any bottles are clearly labelled
- ▶ Ensure bins are provided around the venue.

BEHAVIOUR

- ▶ If unwell, do not attend the venue
- ▶ Cover mouth and nose with a tissue or your elbow when you cough or sneeze
- ▶ If using tissues, place them directly in the bins provided
- ▶ Do not touch your eyes, nose or mouth if your hands are not clean
- ▶ No spitting at any time.
- ▶ Cease face to face social activities (e.g. VIP functions, presentation functions)

TRAVEL

- ▶ Avoid carpools or bus travel with people from different household groups where possible
- ▶ Cease any activities that result in overnight stays

WHAT IS PERMITTED DURING FINAL SERIES

The following is permitted at the venue and during match play;

- ▶ Full competitive matches are permitted within the normal Laws of the Game
- ▶ Where possible, players should come ready to play
- ▶ Social activities following games are discouraged.
- ▶ Maximum of 100 spectators for each outdoor venue. This excludes staff and participants
- ▶ Promote physical distancing of 1.5 metres between spectators
- ▶ One person per 4 square metres in both indoor and outdoor spaces
- ▶ Canteens and BBQ's are permitted in line with relevant government requirements.

WHAT IS NOT PERMITTED DURING FINAL SERIES

- ▶ Changerooms for teams to access (note they will be open for use by match officials and medical)
- ▶ Formal walk-ons by the teams and referees
- ▶ Handshakes before and after the match
- ▶ Team photos before and after the match
- ▶ Other pre match formalities (i.e. gathering at half-way or the centre circle for a moment's silence)
- ▶ Team huddles and high fives (including team songs)
- ▶ Multiplayer goal celebrations
- ▶ Spitting
- ▶ Sharing of equipment including drink bottles, towels, shin pads and bibs

Do not attend matches if you exhibit any of these symptoms



Fever



Cough



Fatigue



Sore throat



Shortness of breath

ENTRY AND EXITS TO VENUES

Players, team officials, match officials and spectators are to ensure that they enter and exit from the correct points at the venue (maps to venues are in Annex A). These pathways are to limit the risk of separate groups of people converging in one place and to manage congestion.

The maps in Annexure A identifies specified spectator areas. All spectators will need to adhere to the physical distancing requirements and are not to exceed the limit of 100 spectators (excluding participants and staff).

Players and match officials for the proceeding matches will be permitted to enter the venue one hour to kick off their match. Spectators will not be allowed to enter the venue until 30 minutes prior to the match that is named on their ticket.

The ground announcer will inform spectators they are to leave the venue at the conclusion of the match.

SEATING AND SPECTATORS

40 tickets will be provided to each team for their spectators per match. An additional 40 will also be participating in the match and 20 staff taking the total number of attendees to no more than 200 at any one time. Only spectators with a ticket will be permitted entry to the venue.

Tickets will be collected and marked off as people enter the venue.

Capital Football will make people aware of the need to physical distance by having signage available around the venue and announcements made over the PA system or by the venue manager.

ATTENDANCE RECORDS AT VENUE

To avoid congestion at the entry point, clubs are being asked to record the names of people to whom they provide a ticket per match.

CHANGEROOMS

For as long as there is a limitation on the number of people allowed per square metre indoor spaces and changerooms cannot be used for;

- ▶ Teams to prepare for a match
- ▶ Coaches to discuss tactics among themselves
- ▶ Coaches to address players pre-match, at half-time, or post-match

Change rooms can be used for;

- ▶ Use by referees, only for the number of people permitted on the signage displayed outside the changeroom

- ▶ Use for medical services and support, only for the number of people permitted on the signage displayed outside the changeroom.

AMENITIES

Toilets will be open for use.

Capital Football have engaged professional cleaners to clean toilets and high touch areas at Deakin and Melrose venues.

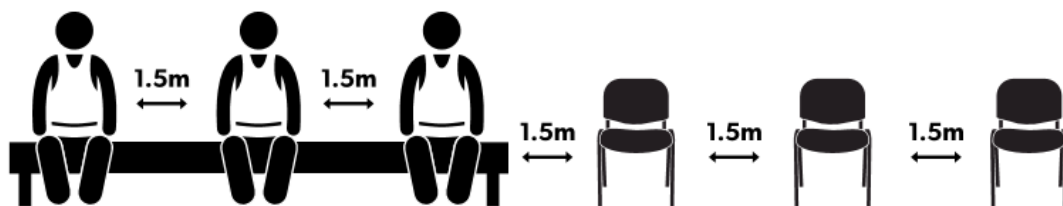
CANTEENS

Final Series matches will have Canteens running, the following protocols will take place;

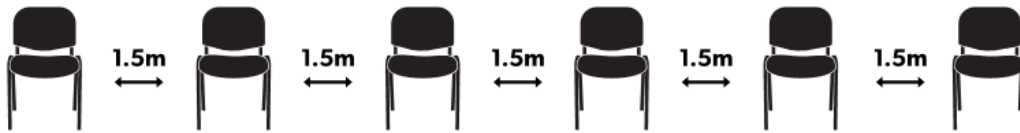
- ▶ Queuing controls to maintain physical distancing will be implemented
- ▶ Appropriate food and beverage handling arrangements will take place
- ▶ Appropriate cash handling arrangements and if possible, EFTPOS will be available
- ▶ Consideration of lower risk food options (i.e. food that require less direct food handling/contact)
- ▶ Hygiene measures including sanitiser will be implemented
- ▶ Alcohol will not be served at the venue
- ▶ Capital Football have engaged professional cleaners to attend to clean high touch areas around the canteen at 2-hour intervals across the day.

ORGANISATION OF TEAM BENCHES

Where team benches are permanent (fixed), limit the number of seats to ensure 1.5 metres between team officials and substitutes. If necessary, provide additional seats to extend the length of the bench.



Where team benches are made up of plastic/other moveable chairs, position these so that they are at least 1.5 metres apart. Ensure these chairs remain at the required distance apart and between matches.



Where there are no benches or chairs available, players and team officials must adhere to the 1.5 metre physical distancing requirements.

Players on the bench are to be allocated their own bib and at the conclusion of the match they are to take the bib home and wash it.

Benches will be wiped down at the end of each match to ensure that they are clean for the next teams to utilise.

COMMUNICATION

Over the course of the Final Series Capital Football will provide regular communication with Clubs. Clubs play an important role in ensuring messages from Capital Football are forwarded to their members and spectators. This will ensure that clear messages guidance is provided to participants and stakeholders across a range of communication channels. Capital Football will;

- ▶ Deliver clear messaging across the all-digital platforms (i.e. websites and/or social media)
- ▶ Remind and encourage participants to maintain good hygiene behaviours to reduce risk of transmission
- ▶ Display posters about COVID-19 at appropriate spots around all Final Series venues.
- ▶ Advise players, coaches, match officials and spectators not to attend matches if unwell, if they have travelled overseas, into NSW and VIC hotspots, if they have been exposed to a person with COVID-19 in the preceding 14 days or they are an 'at risk' due to their age or a medical condition.

Signage that will be displayed throughout the day is as follows;

- ▶ Keep your distance
- ▶ Stay 1.5 metres apart
- ▶ Maintain physical distancing
- ▶ Please wash your hands
- ▶ Don't forget to sanitise

ANNEXURE A – VENUE MAPS

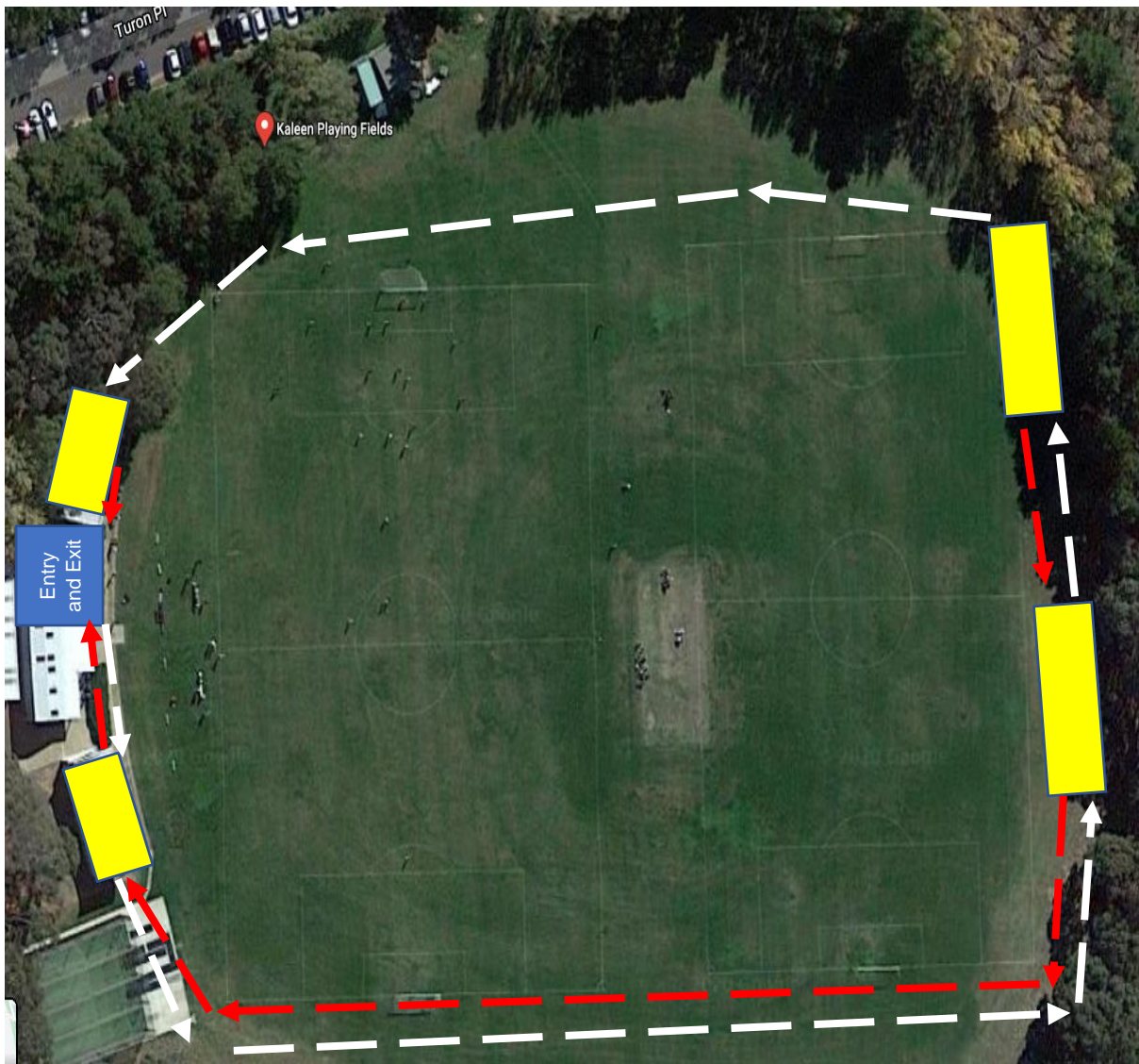
DEAKIN STADIUM



MELROSE SYNTHETIC






KALEEN ENCLOSED



O'CONNOR PARK - COOTAMUNDRA



LEGEND

Spectator Area	
Exit path	
Entry path	
Entry and Exit point	