



2019 FUTSAL SENIOR SOCIAL WINTER

INFORMATION PACK

**NOMINATIONS CLOSE
TUESDAY 23rd APRIL**



2019 WINTER COMPETITION

(May 2019 – September 2019)

Welcome

Welcome to the ***CAPITAL FOOTBALL – 2019 FUTSAL WINTER SOCIAL COMPETITION!***

Capital Football would like to extend an invitation to all new and continuing senior teams to nominate for the upcoming 2019 winter social season of Futsal.

All teams will be required to nominate via the online team nomination form on the link below:

<https://form.jotform.co/90287475773874>

Please note:

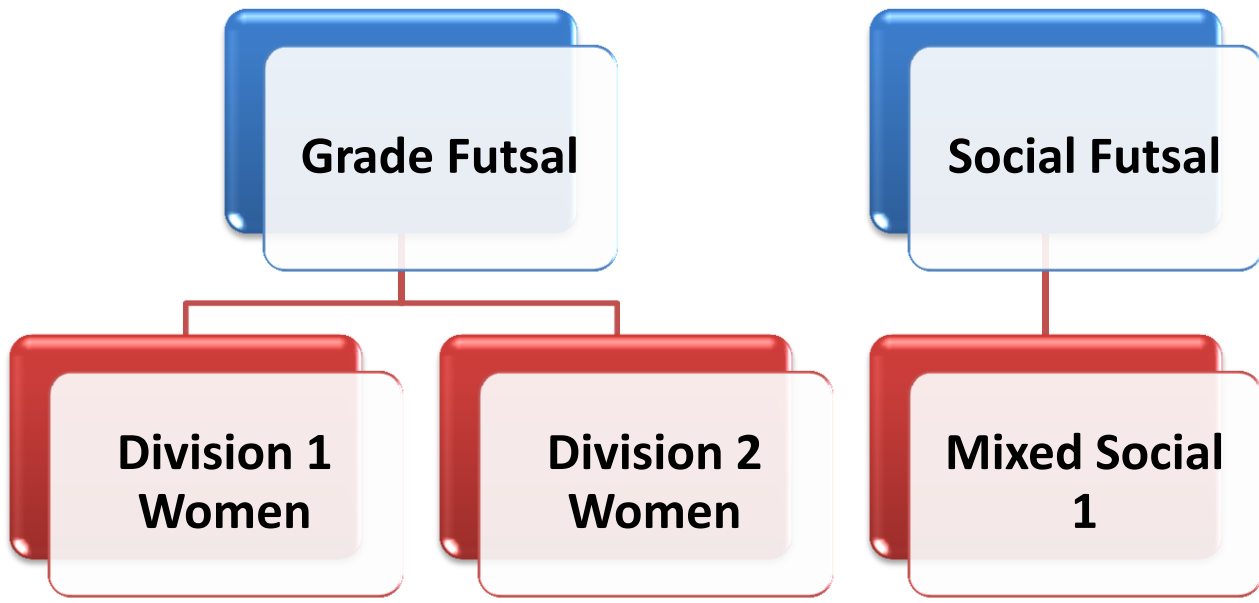
- There have been some venue changes for the winter season.
- Futsal Fees are charged as a team fee as opposed to individual player fees
- Individual registration fees will still be applied via Play Football for players that weren't registered for the 2018/19 Summer Futsal Season (National Registration Fee)

Please read the information carefully and ensure that nominations are returned completed as soon as possible. Completed nominations will be accepted in order of submission. Once venues reach capacity that competition will no longer be available.

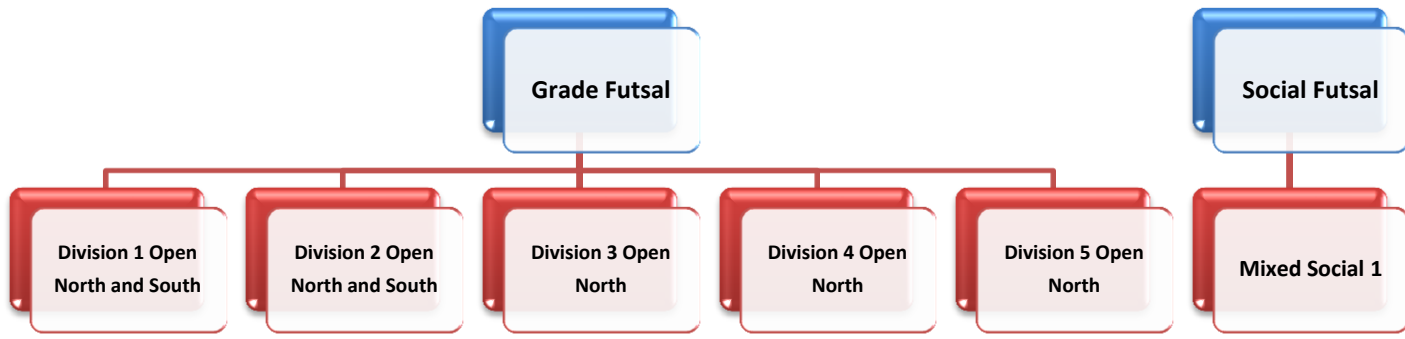
Competitions on offer:

- | | | |
|----------------|-----------------|---------------------------------------|
| • Women | - Divisions 1-2 | ACT wide competitions |
| • Open | - Divisions 1-5 | North and South Canberra competitions |
| • Mixed Social | - Division 1 | ACT wide competitions |

Competition Structure - Women



Competition Structure – Men/Open



Competition Overview

<i>Division</i>	<i>Round 1 Dates</i>	<i>Times & Day</i>	<i>Venue</i>
SOCIAL DIVISIONS			
Mixed Social	May 10	6:00 - 9:45pm – Friday	ANU or AIS STF
ACT WIDE WOMENS DIVISIONS			
Div 1 Women	May 6	6:00 - 9:45pm – Monday	ANU
Div 2 Women	May 8	6:00 - 9:45pm – Wednesday	AMA
NORTHSIDE OPEN DIVISIONS			
Div 1 Open Nth	May 6	6:00 - 9:45pm – Monday	ANU
Div 2 Open Nth	May 6	6:00 - 9:45pm – Monday	ANU
Div 3 Open Nth	May 8	6:00 - 9:45pm – Wednesday	ANU
Div 4 Open Nth	May 8	6:00 - 9:45pm – Wednesday	ANU
Div 3/4 Open Nth	May 9	7:30 - 9:00pm – Thursday	RAD
Div 4 Open Nth	May 10	6:00 - 9:45pm – Friday	ANU
Div 5 Open Nth	May 10	6:00 - 9:45pm – Friday	ANU
Div 5 Open Nth	May 12	6:00 - 9:45pm – Sunday	JPC
SOUTHSIDE OPEN DIVISIONS			
Div 1 Open Sth	May 12	6:00 - 9:45pm – Sunday	CC
Div 2 Open Sth	May 8	6:00 - 9:45pm – Wednesday	MHS

Capital Football reserves the right to reasonably combine divisions and venues to ensure a viable competition. Times and dates provided are only an estimate. Final competition details will be dependent on the number of teams nominating into the divisions.

Playing Venues

Venue	Address
AIS STF – Australian Institute of Sport Training Hall	AIS Building 13 - Leverrier Street, Bruce
AMA – Amaroo School	135 Katherine Avenue, Amaroo (Access also via Horse Park Drive)
ANU – Australian National University	ANU Building 19A - North Road, Acton
CC – Canberra College	2 Launceston St, Phillip
JPC – John Paul College	Gungahlin Drive, Nicholls
MHS – Melrose High School	Marr Street, Pearce
RAD – Radford College	1 College St, Bruce (Best access via Haydon Drive entrance)

Draws and Results

All the latest news and updates regarding the Capital Football Futsal Winner Competition can be found at the futsal tab on the website – www.capitalfootball.com.au

Draws will be released on this website no longer than ten days prior to competitions starting.

PLEASE NOTE: draws are subject to change throughout the season for a variety of reasons. CF will endeavour to contact teams in the event of such changes, but please check the online draw on SportsTG each week prior to your matches.

Insurance Information

Capital Football carries sports injury insurance with SLE Insurance through Gow Gates Insurance Brokers for registered members. To be a registered member of Capital Football a participant must have registered with Capital Football or a Capital Football affiliated club online via Play Football.

In the event of injury, go to the following website for the relevant procedure and the claim form: <http://www.gowgatessport.com.au/football/>

Playing Conditions and Disciplinary Regulations

Playing conditions governing the Winter Futsal Competition are currently under review, but will be available on the CF website prior to nominations closing www.capitalfootball.com.au. By registering in a Capital Football competition, you agree to comply with the Competition Rules and Disciplinary Regulations which govern it.

Note: Capital Football will not be tolerating any misconduct by futsal associated teams, players and spectators. All individuals associated should be made aware of the Capital Football Code of Conduct. Any individual or team reported of misconduct may result in the withdrawal from the competition and further disciplinary action. Please assist in maintaining a safe environment for all involved.

Fees & Fines

The fee structure for the 2019 Futsal Winter Competition will now implement a **TEAM FEE** rather than individual player fees. The team delegate will be required to submit the full team payment online when submitting the team nomination form. The cost per player should be divided amongst the individual players based on the number of players in each team (the more players registered the cheaper the individual cost).

- | | |
|---|----------------------|
| 1. Futsal 2018/19 Team Fee Open Social Grade | \$1,500.00 (inc GST) |
| 2. Futsal 2018/19 Team Fee Women's Social Grade | \$1,500.00 (inc GST) |
| 3. Futsal 2018/19 Team Fee Mixed Social Grade | \$1,400.00 (inc GST) |

Fees take into account: venue hire, referee fees, registration, administration, trophies and Facility Infrastructure Levy.

Team Fees Due: When submitting the nomination form

The fine schedule will be released in the updated Capital Football Futsal Competition Rules

Player Registrations

Players will still be required to register online via Play Football. Please ensure you select the correct package on Play Football below when registering as a player.

PF Package Open Social Grade	PF Package Women's Social Grade	PF Package Mixed Social Grade
Winter Futsal Open (Returning Player)	Winter Futsal Women's (Returning Player)	Winter Futsal Mixed (Returning Player)
Winter Futsal Open (1 st team)	Winter Futsal Women's (1 st Team)	Winter Futsal Mixed (1 st Team)
Winter Futsal Open (2 nd team)	Winter Futsal Women's (2 nd Team)	
Winter Futsal Open (3 rd team)		

Players may register and play in multiple competitions and must register on Play Football as many times as the number of team they are playing on. See the Capital Football Futsal Competition Rules (available online soon – www.capitalfootball.com.au) for clarification on the registration status and movement of players between grades, as well as the full schedule of fines. Players can play in a maximum of 3 divisions.

Registration process (For returning players from Summer, or second/third team registrations):

- **Step 1**

The nominated Team Delegate is to complete the online *Team Nomination Form*:

<https://form.jotform.co/90287475773874>

- **Step 2**

The nominated Team Delegate is to determine the individual player costs and collect the individual registration fees for each player in their team. The Team Delegate will be required to collect the team fees and submit full payment to Capital Football when completing their nomination form.

- **Step 3**

All players must individually register via Play Football. This process is similar to registering for a Club for an outdoor competition. Players must complete a separate registration for multiple teams. Follow these steps to complete your individual registration:

1. Go to www.playfootball.com.au and click on the 'Where Can I Play?' button and then on the 'Adult Football' tab. Search for 'Capital Futsal' and select that club.
2. Click Start your Registration and follow the prompts
3. If you already have a Football Account sign in using your account details. If you do not have a Football Account, create an account and then log in. (NOTE: If this is your first time using Play Football, the system will find your old MyFootballClub account using your details and you will be able to claim that profile).
4. Select the person/s you are registering and select 'Continue'.
5. For Product Selection select 'Capital Futsal' as the Club, 'Player' as the role, 'Futsal' as the Football Type and 'Social' as the Playing Level.
6. This will bring up several packages to select from. Select the package that applies to you and follow the process.

Registration process (For new players):

- **Step 1**

The nominated Team Delegate is to complete the online *Team Nomination Form*:
<https://form.jotform.co/90287475773874>

- **Step 2**

The nominated Team Delegate is to determine the individual player costs and collect the individual registration fees for each player in their team. The Team Delegate will be required to collect the team fees and submit full payment to Capital Football when completing their nomination form.

- **Step 3**

All players must individually register via Play Football. This process is similar to registering for a Club for an outdoor competition. Players must complete a separate registration for multiple teams. Follow these steps to complete your individual registration:

1. Go to www.playfootball.com.au and click on the 'Where Can I Play?' button and then on the 'Adult Football' tab. Search for 'Capital Futsal' and select that club.
2. Click Start your Registration and follow the prompts
3. If you already have a Football Account sign in using your account details. If you do not have a Football Account, create an account and then log in. (NOTE: If this is your first time using Play Football, the system will find your old MyFootballClub account using your details and you will be able to claim that profile).
4. Select the person/s you are registering and select 'Continue'.
5. For Product Selection select 'Capital Futsal' as the Club, 'Player' as the role, 'Futsal' as the Football Type and 'Social' as the Playing Level.
6. This will bring up several packages to select from. Select the package that applies to you and follow the process.
7. If you were not registered for a team in the 2018/19 Summer Futsal Season, you will have to make your payment for the FFA National Registration Fee before you are allowed to register (\$3.15-\$5.25).

Important information:

- Competitions are filled on a first come, first served basis upon full payment.
- Capital Football reserves the right to refuse a registration.
- Team names will be accepted at the discretion of the Futsal League Coordinator. Any offensive or inappropriate team names will be deemed unacceptable.

Team Delegates

Upon registering, each team must nominate a Team Delegate (TD). This person will be the point of contact for the team and be responsible for any communication between Capital Football. The TD may be contacted in regards to draw changes, venue changes and any other competition concerns and must ensure all relevant information is passed onto the team.

Delegates Checklist:

To complete a team registration, Team Delegates must ensure that the following has been completed and submitted to Capital Football:

- ✓ Team Nomination Form: <https://form.jotform.co/90287475773874>
- ✓ Full team payments (must be paid online as part of nomination process)
- ✓ All individual players have registered on Play Football – insert [link](#)

Late entries for competitions that are not full may be accepted.

Uniforms

If your team requires a uniform for the upcoming Futsal season, we recommend you contact either

Viva www.vivaglobal.com.au

Nike www.teamsportsaustralia.com

Mitre www.mitre.com

Hummel www.hummel.com.au

Joma www.joma.com.au

Konqa www.konqa.com.au

Contact

Address:

Capital Football
Football House
Unit 2/3 Phipps Close
Deakin ACT 2600

Futsal League Coordinator:

Nick van Aalst
nick.vanaalst@capitalfootball.com.au
(02) 6189 2213

Postal Address:

PO Box 50
Curtin ACT 2605

Capital Football:

www.capitalfootball.com.au
(02) 6260 4000